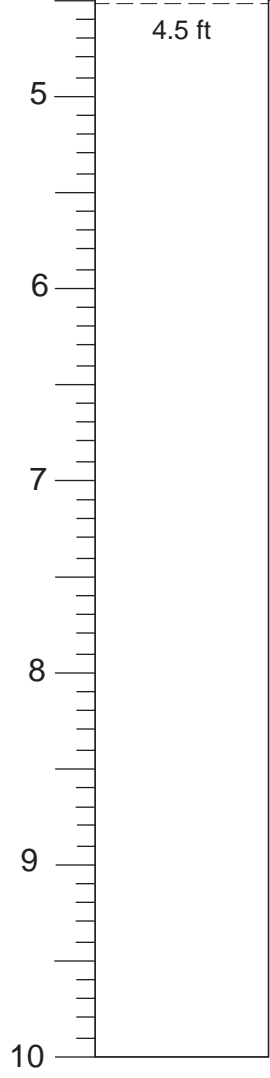
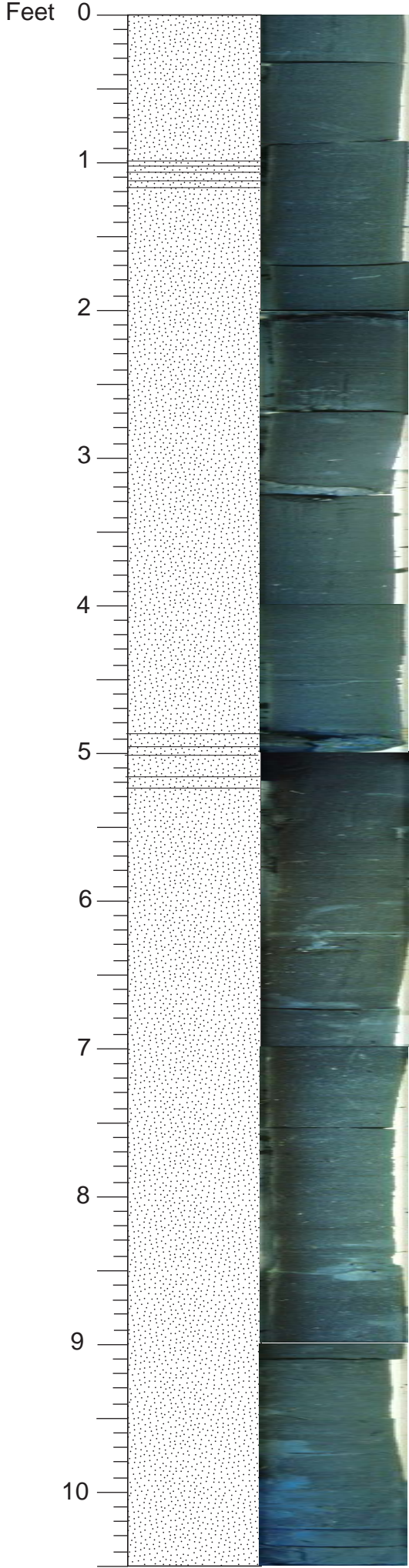


Cape May Core #201
 Start depth: 1350
 Stop depth: 1360
 Recovery (ft): 4.5
 Date: 4/15/94
 Described by: CL

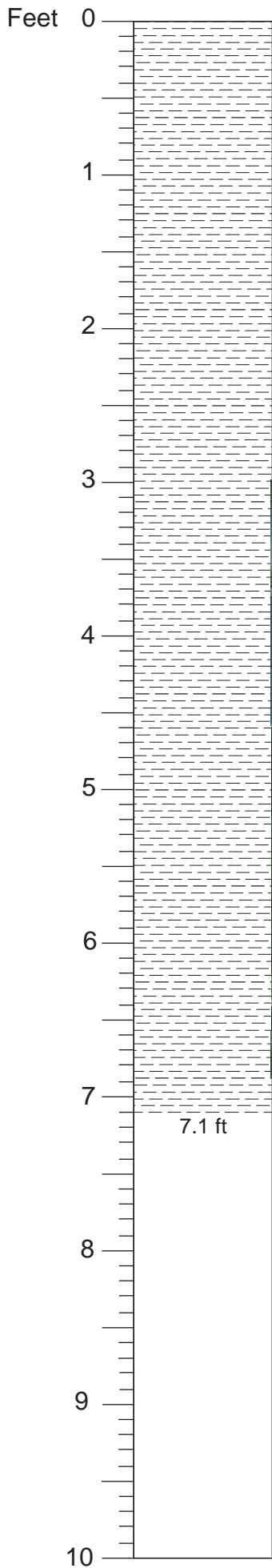




0 - 10.5 SAND; laminated, brown, firm, sand < 10%, microfossils visible (*Lenticulina*) thin shells occasionally occur; pyrite nodules; color: 5y 3/1 - 4/4; dark gray - dark gray

Cape May Core #202
Start depth: 1360
Stop depth: 1370
Recovery (ft): 10.5
Date: 4/15/94
Described by: CL

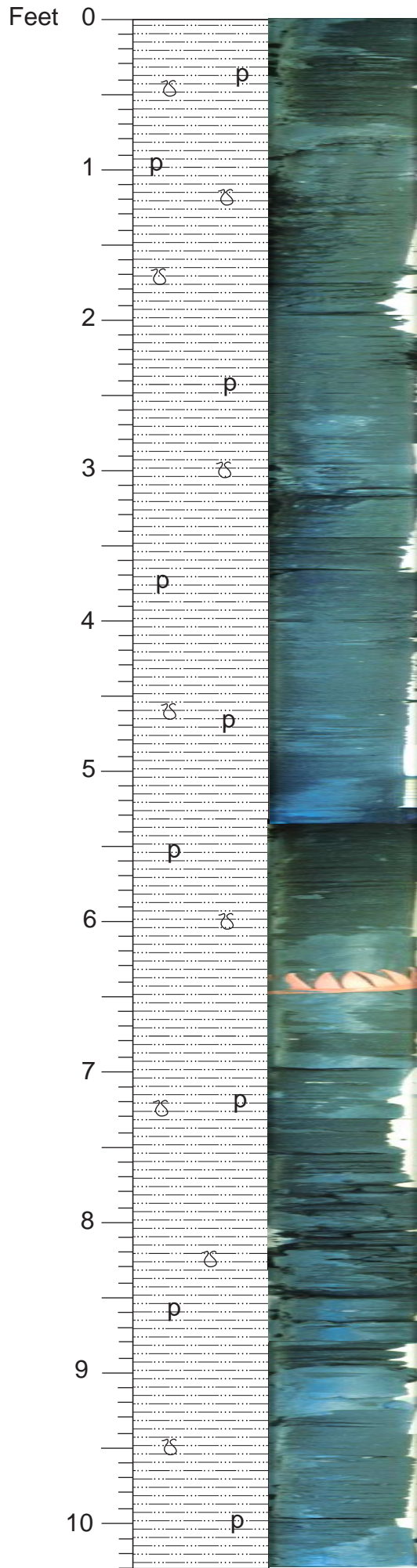
10.5 ft



0 - 7.1 CLAY; laminated, burrowed, brown, firm, fossiliferous; microfossils visible;
Color: 5Y 3/1 - 4/4

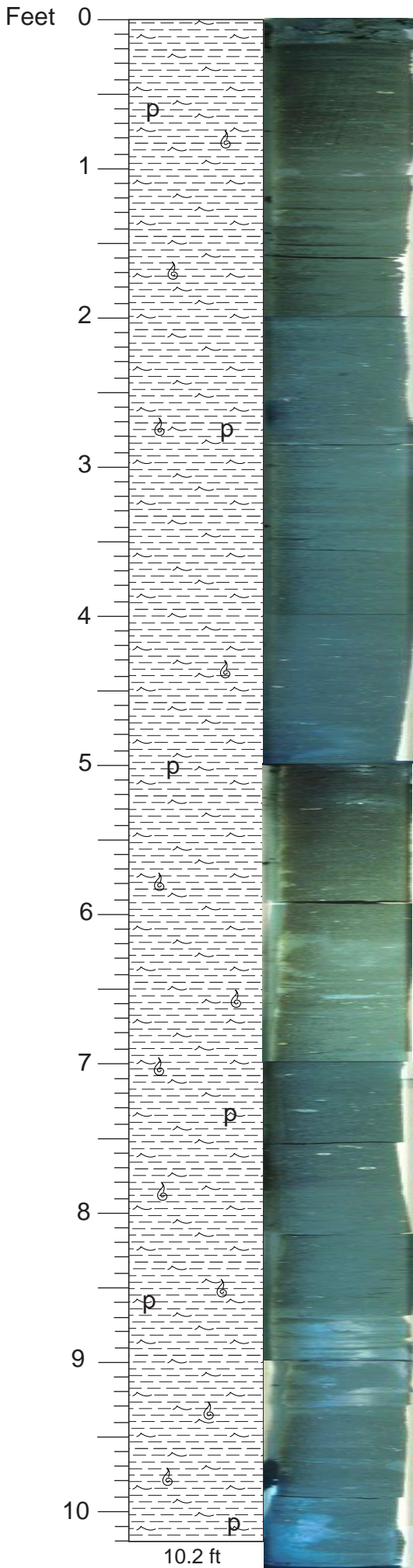
7.1 ft

Cape May Core #203
Start depth: 1370
Stop depth: 1380
Recovery (ft): 7.1
Date: 4/15/94
Described by: CL



0 - 10.3 CLAY; laminated, burrowed, brown, firm, clay/silty clay; fossiliferous, with pyrite; color: 5Y 3/1 - 4/4

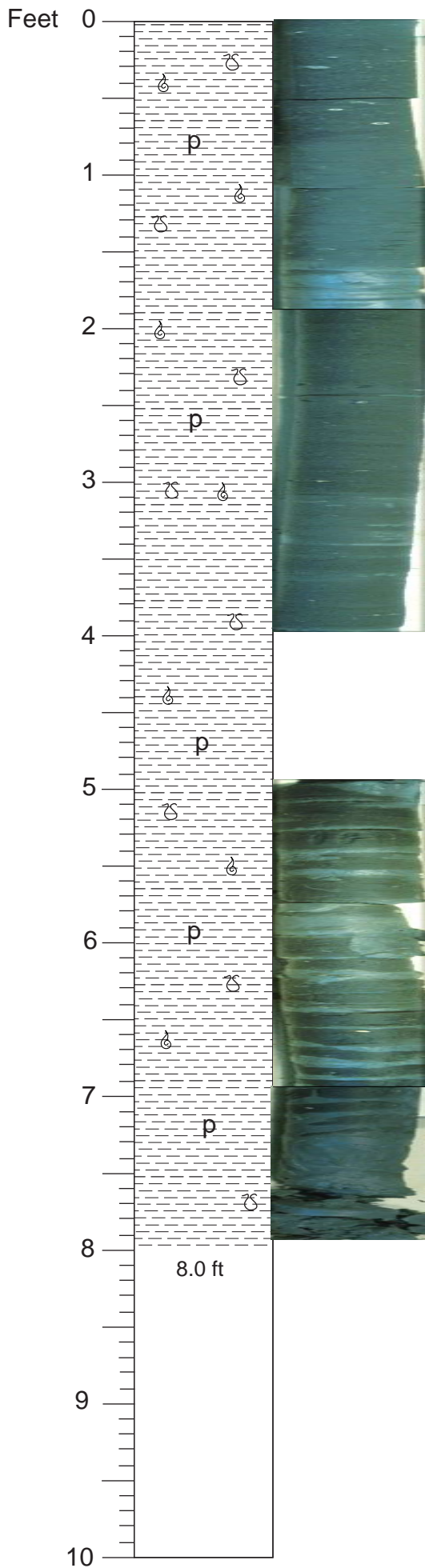
Cape May Core #204
 Start depth: 1380
 Stop depth: 1390
 Recovery (ft): 10.3
 Date: 4/15/94
 Described by: CL



0 - 10.2 GLAUCONITIC CLAY; brownish gray - greenish gray; laminated; glauconitic silty, firm; very fossiliferous, shells common, pyrite present, same as above; Color: 5Y 3/1 4/1

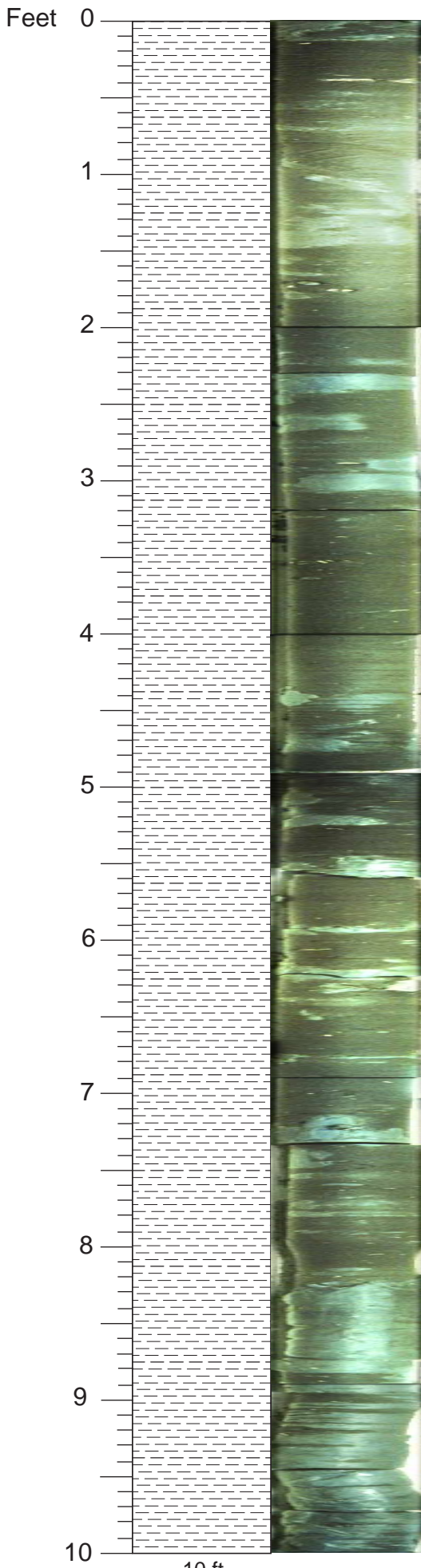
Cape May Core #205
 Start depth: 1390
 Stop depth: 1400
 Recovery (ft): 10.2
 Date: 4/15/94
 Described by: CL

10.2 ft



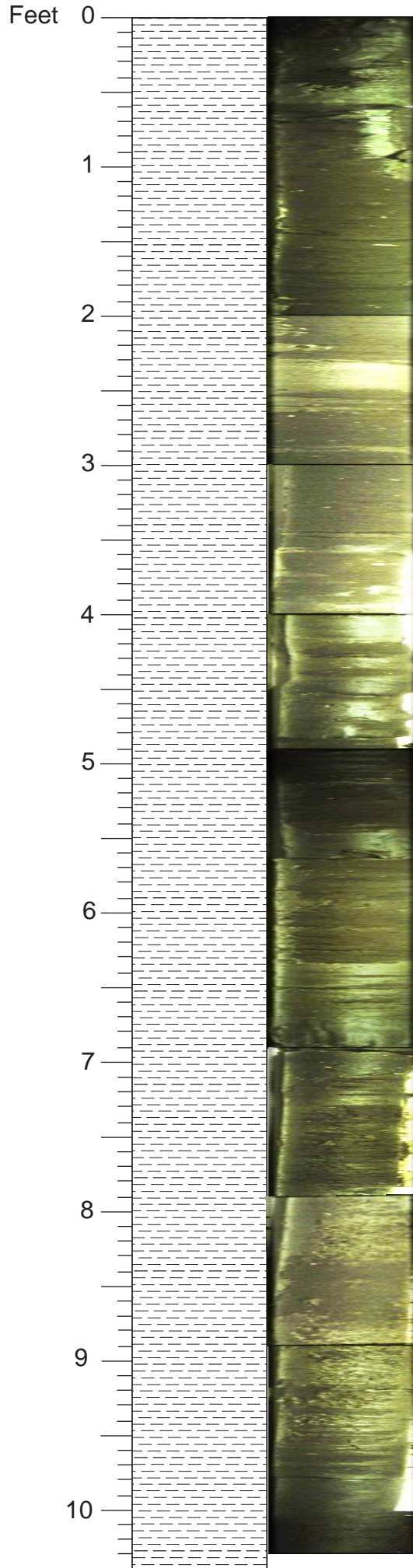
0 - 8.0 CLAY; brownish - greenish gray; laminated - burrowed; silty, firm; microfossils throughout, shells common, pyrite nodules frequent; color: 5Y 3/1 - 4/1

Cape May Core #206
 Start depth: 1400
 Stop depth: 1410
 Recovery (ft): 8.0
 Date: 4/15/94
 Described by: CL

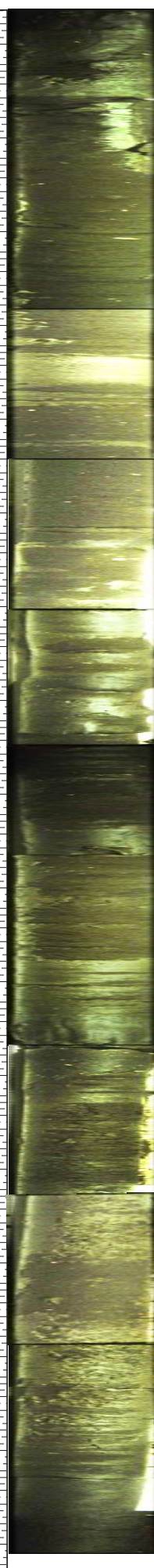


0 - 10 CLAY; same as above; brownish - greenish gray; laminated, burrowed, silty, frequent shells, pyrite nodules, and microfossils; color: 5Y 3/1 - 4/1 gray - very dark gray

Cape May Core #207
Start depth: 1410
Stop depth: 1419
Recovery (ft): 10
Date: 4/15/94
Described by: CL

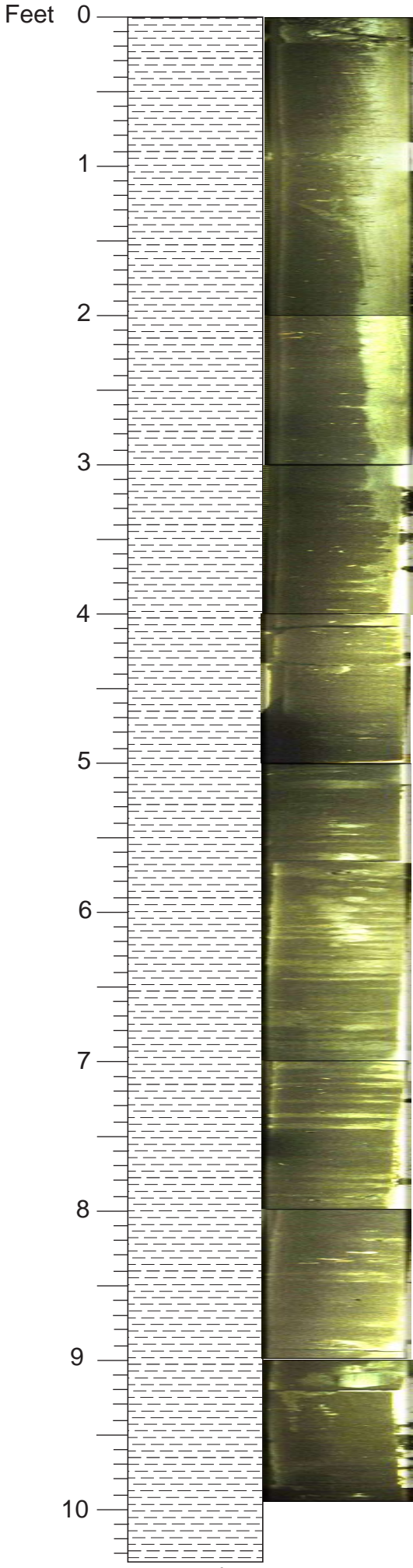


0 - 10.4 CLAY; same as above; greenish gray; silty, laminated, fossil fragments;
color: 5Y 3/1- 4/1
11-foot run

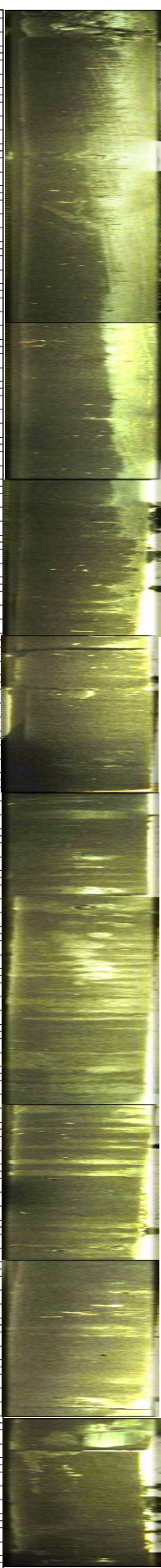


Cape May Core #208
Start depth: 1419
Stop depth: 1430
Recovery (ft): 10.4
Date: 4/15/94
Described by: MVF

10.4 ft

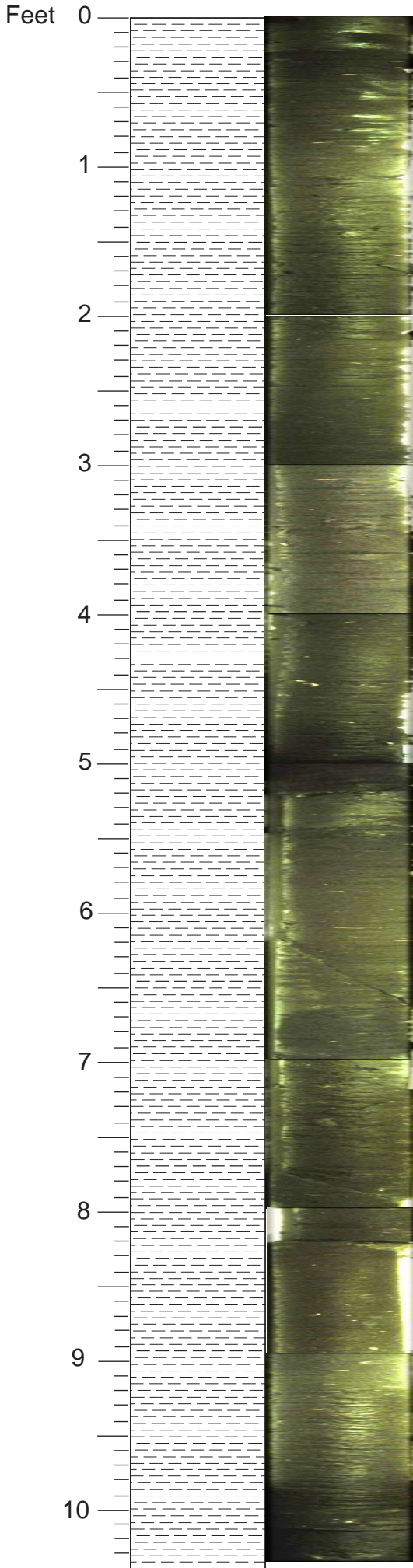


0 - 0.2 - drilling disturbance (muck).
0.2 - 10.35 same as above; drilling seems to bring out laminations; abundant shell fragments; large pyrite nodule at 5.8 ft; glauconite filled burrows at 1.4 and 7.6 ft; color: 5Y 3/1 - 2.5/1 very dark gray - black



Cape May Core #209
Start depth: 1430
Stop depth: 1440
Recovery (ft): 10.35
Date: 4/15/94
Described by: MVF

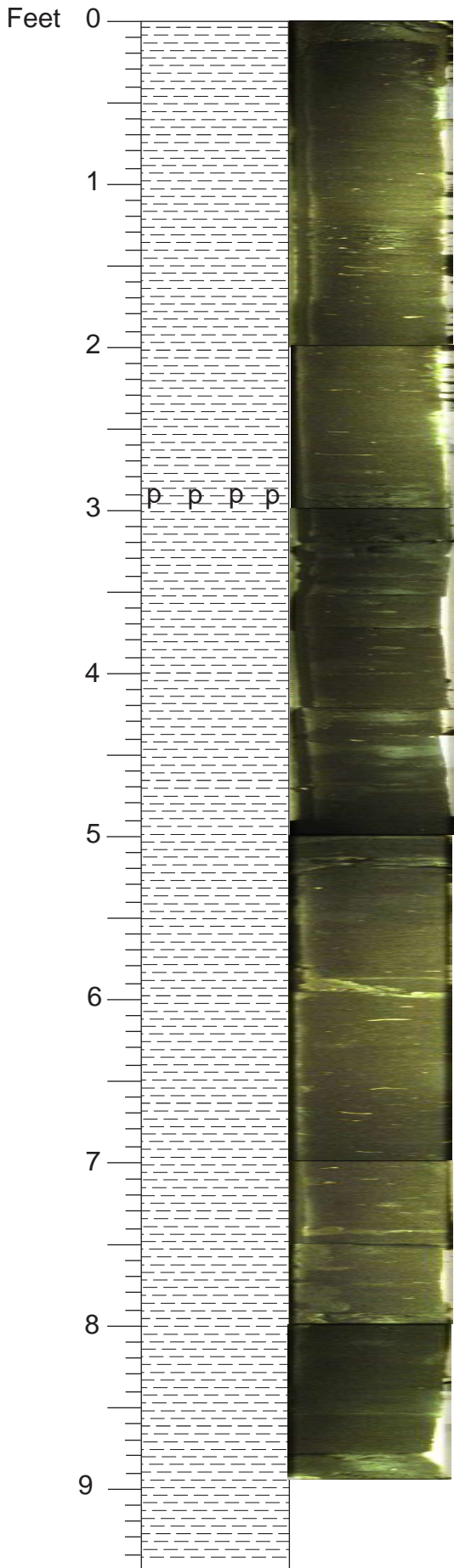
10.35 ft



0 - 10.4 CLAY; same as above; greenish brownish; fossil fragments disturbed via coring; fractures; this core slipped out of barrel on initial run, drillers jammed down an extra half foot on retry, so 10.5 ft run; color: 5Y 3/1 - 2.5/1 very dark gray - black

Cape May Core #210
Start depth: 1440
Stop depth: 1450.5
Recovery (ft): 10.4
Date: 4/15/94
Described by: MVF

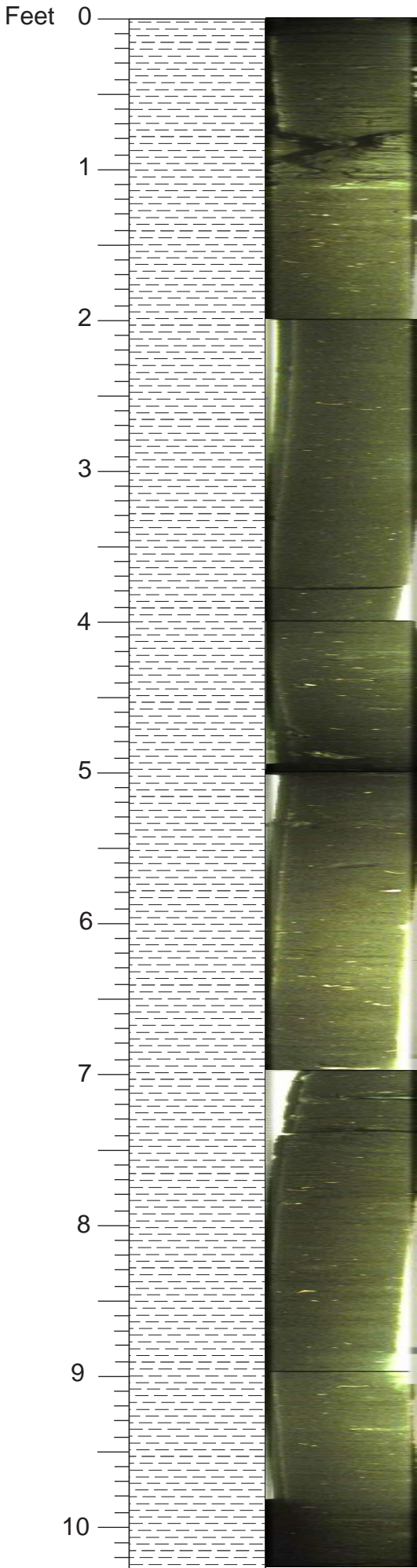
10.4 ft



0 - 9.45 CLAY; same as above; lots of bioturbation, foraminifers; pyrite bed at 2.9 - 3.0 ft; some big (3mm) pyrite chunks scattered about here and there; pyrite-filled burrow at 1458 ft; color: 5y 3/1 - 2.5/1

Cape May Core #211
Start depth: 1450.5
Stop depth: 1460
Recovery (ft): 9.45
Date: 4/16/94
Described by: MVF

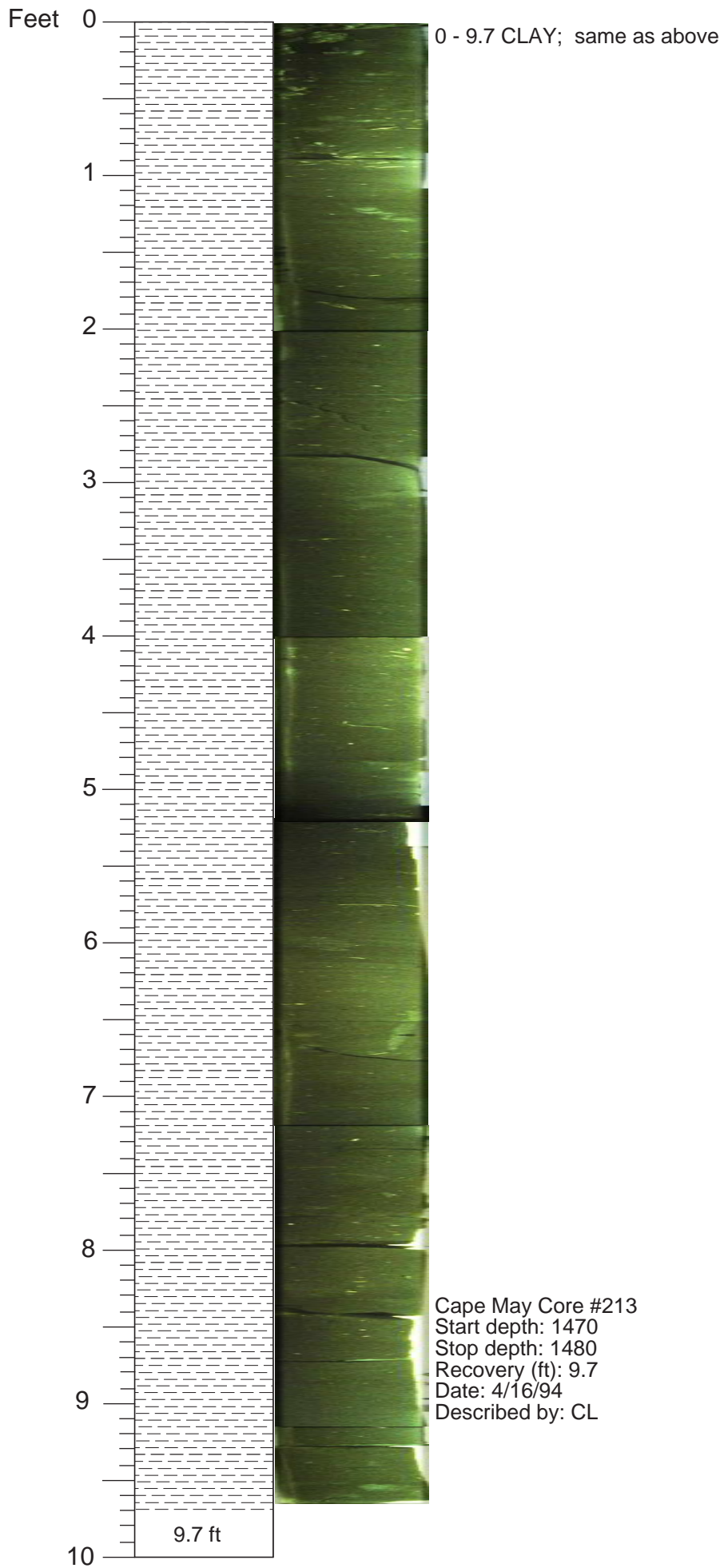
9.45 ft



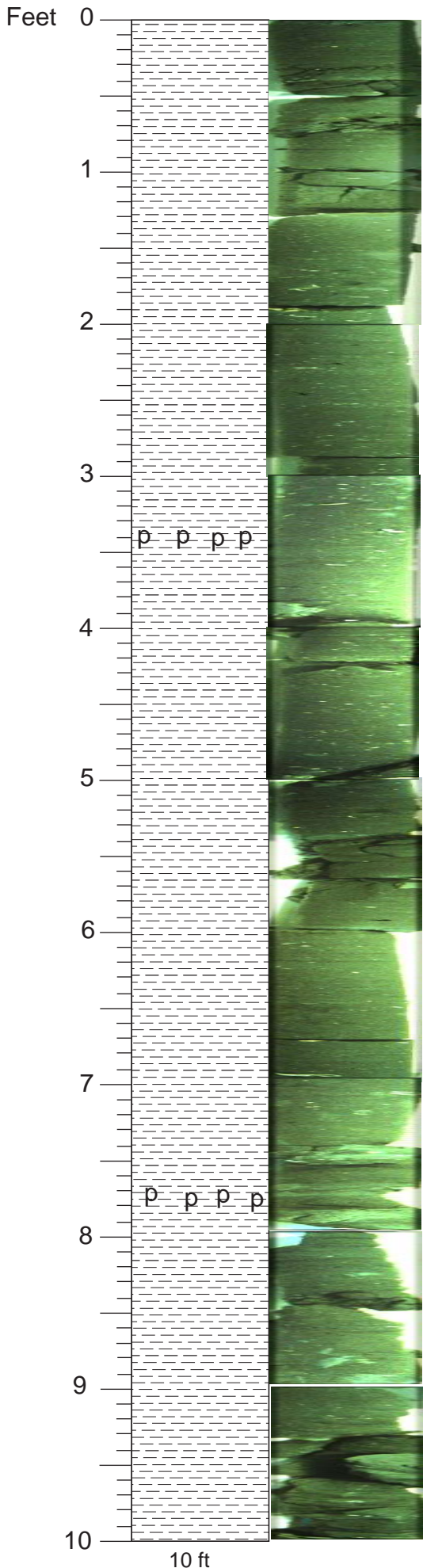
0 - 10.3 CLAY; same as above; greenish-brownish gray, laminated bioturbated, silty, firm; small thin shells common, pyrite nodules occur at several horizons microfossils frequent; color: 5 Y 3/1 - 4/1
*I believe it is the same color as MVF described. When core is wet and at night, cores tend to be darker, daytime and drier cores look lighter

Cape May Core #212
Start depth: 1460
Stop depth: 1470
Recovery (ft): 10.3
Date: 4/16/94
Described by: CL.

10.3 ft

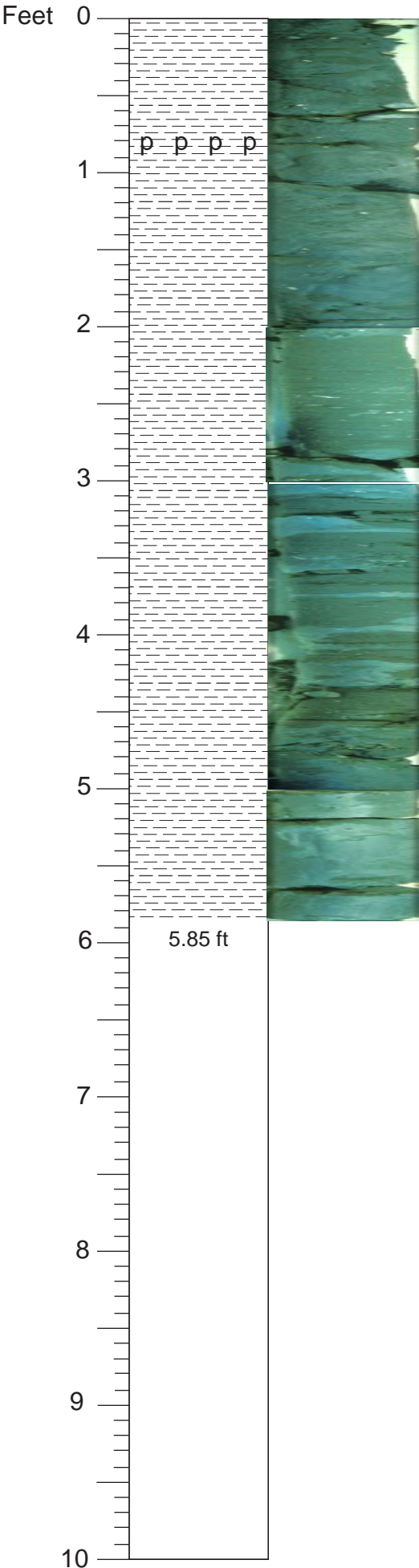


Cape May Core #213
Start depth: 1470
Stop depth: 1480
Recovery (ft): 9.7
Date: 4/16/94
Described by: CL



0 - 10 CLAY; same as above, could be a whole shell at 6.95 ft; big pyrite nodules at 3.4 (.5 cm) and 7.7 (1 cm); this is the core that was in the stuck core-barrel; it's disturbed in different places (fractures, some twisting)

Cape May Core #214
Start depth: 1480
Stop depth: 1490
Recovery (ft): 10
Date: 4/17/94
Described by: MVF



0 - 5.85 CLAY; same as above; greenish-brown, clay with fossil material; mud not washed well; huge pyrite nodule (3 cm) at 0.7 ft; heavy mud rind on this one; possible shark tooth at bottom

Cape May Core #215
Start depth: 1490
Stop depth: 1500
Recovery (ft): 5.85
Date: 4/17/94
Described by: MVF

5.85 ft